



ULTRA-TREAD®

ULTIMATE SEAMLESS FLOOR TOPPING

Daily productivity means hard abuse on any facility's floor. In addition to foot and vehicular traffic, floors also deteriorate quickly due to repeated chemical abuse, wet environments, and drastic temperature changes, which put you and your assets at risk. The solution: Ultra-Tread. The fast, effective flooring system from Tnemec Company's **StrataShield™** family of products.

A polyurethane modified concrete floor topping, Ultra-Tread is designed for fast installation and quick return-to-service, limiting costly downtime. It's an ideal flooring solution for USDA- and FDA-regulated facilities, and offers excellent resistance to thermal shock, chemicals, and the high-alkalinity usually associated with moisture vapor transmission (MVT).

A versatile and self-priming floor topping that withstands hot liquids and aggressive cleanings, Ultra-Tread is ideally suited to meet conditions in food and beverage processing plants, meat and poultry plants, pharmaceutical manufacturing, paper facilities, commercial/industrial kitchens, or anywhere a durable floor topping is required.

FEATURES AND BENEFITS

- Quick return-to-service
- Resistant to thermal shock
- Chemical resistant
- Seamless and easy to clean
- Suitable for USDA & FDA regulated facilities
- Low odor for use near occupied spaces
- Tolerates high moisture vapor transmission (MVT)

Available in five distinct versions, as well as a glaze coat, there is an Ultra-Tread product for all your flooring needs.

Products and Colors 

THE PRODUCTS

SERIES 241 ULTRA-TREAD MVT A low odor, slurry-applied base layer designed to reduce moisture vapor emissions prior to the application of non-breathing, polymer floor topping finishes. Series 241 is self-priming and can be applied to 10 day old concrete.

SERIES 242 ULTRA-TREAD S A versatile, low odor, slurry-applied mortar. Series 242 is typically installed at a nominal thickness of 1/8" to 3/16" (3 to 5 mm). This product can be applied as a stand-alone flooring system, or broadcast with aggregate, decorative colored quartz or flake to modify its texture and/or appearance. Compatible with a variety of clear or pigmented topcoats to seal the system.

SERIES 243 ULTRA-TREAD V A trowelable mortar for vertical surfaces such as trenches, equipment pads and cove base. Series 243 provides a seamless floor to wall transition. This product is used in conjunction with Series 242, 244 and 245 and provides a smooth surface finish.

SERIES 244 ULTRA-TREAD M A trowelable mortar with high early strength, Series 244 is typically used to resurface floors degraded by physical or chemical attack. This product provides a slightly textured finish and is typically installed as a stand-alone system with a nominal 1/4" to 3/8" (6 to 9 mm) thickness.

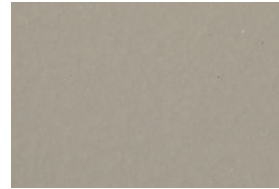
SERIES 245 ULTRA-TREAD S A versatile, low odor, slurry-applied mortar. Series 245 is typically installed at a nominal thickness of 3/16" to 1/4" (5 to 6 mm). This product can be applied as a stand-alone flooring system, or broadcast with aggregate, decorative colored quartz or flake to modify its texture and/or appearance. Compatible with a variety of clear or pigmented topcoats to seal the system.

SERIES 246 ULTRA-TREAD GLAZE A pigmented, high-build, low odor, polyurethane coating. Typically used as a topcoat for sealing or locking aggregate in Series 242 Ultra-Tread S or Series 245 Ultra-Tread S broadcast texture finishes.

STANDARD COLORS

Colors represented are photographic representations of actual standards and are intended for reference purposes only. These representations should not be used to finalize color selection(s). Please contact your local Tnemec coatings consultant for color accurate samples.

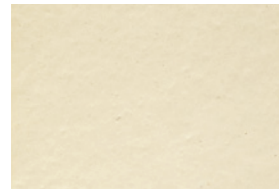
Note: Ultra-Tread utilizes aromatic chemistry which can amber or darken with age or exposure to UV light.



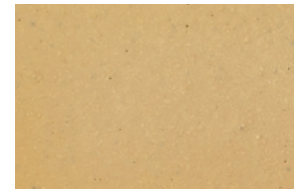
Gray



Red



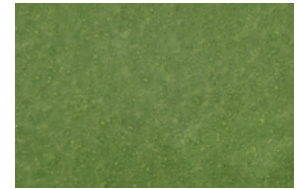
Off-White*



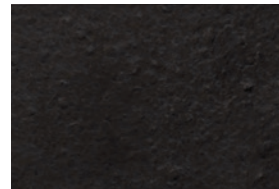
Beige*



Blue*



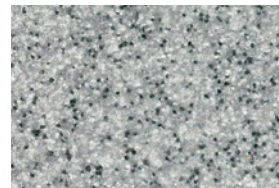
Green*



Black*



Safety Yellow*



Broadcast Quartz**



Broadcast Flake**

**Additional lead time may apply.*

***Series 241, 242 and 245 can also be broadcast with colored quartz or flake for a decorative appearance and then coated with a clear chemical resistant sealer. A second quartz or flake broadcast may be required to achieve uniform color and texture. For standard quartz and flake blend options, see the StrataShield Decorative Quartz or Deco-Fleck color card.*

Published technical data, instructions and pricing are subject to change without notice. Contact your Tnemec technical representative for current technical data, instructions and pricing. Warranty information: The service life of Tnemec's coatings will vary. For warranty, limitation of seller's liability and product information, please refer to Tnemec Product Data Sheets at tnemec.com or contact your Tnemec technical representative. © Tnemec Company, Inc. 2022 FLYUT